

Industrial Colour Selector

The Industrial Colour Selector features products suitable for use on interior and exterior applications. It includes warrantable products up to 15 years durability and non-warrantable products.



INTERIOR	•	•	•
EXTERIOR	•	•	•

Dulux World of Colour®
Powder Coat Series
Australian Collection

Dulux®

Product Range

RANGE	COLOUR NAME	FINISH	LOOK	RC	CB	PRODUCT CODE	R	G	B	LRV#	SPECULAR
											LIGHT
											REFLECTANCE#
Alphatec	Blaze Blue	Gloss	Bright			98419941	0	128	183	18	3.7
Alphatec	Dark Violet	Gloss	Bright			98451926	89	88	123	9	3.5
Alphatec	Egyptian Teal	Gloss	Bright			9846536G	0	156	147	26	4.1
Alphatec	Flame Red	Gloss	Bright			98419959	153	58	58	10	3.6
Alphatec	French Blue	Gloss	Bright			98432725	41	105	170	14	4.2
Alphatec	Lemon Yellow	Gloss	Bright			98432120	248	212	87	68	4.3
Alphatec	Mamba Green	Satin	Bright			9846538S	142	174	69	37	3.0
Alphatec	Mistletoe	Gloss	Bright			98451040	45	119	70	14	3.6
Alphatec	Pink Spell	Gloss	Bright			9844480G	218	118	134	30	4.3
Alphatec	Pommel Blue	Gloss	Bright			98451034	40	98	141	11	3.4
Alphatec	R13 Signal Red	Gloss	Bright			9844481G	181	72	64	15	4.2
Alphatec	Safety Yellow	Gloss	Bright			9842015G	245	162	50	46	4.4
Alphatec	Space Blue	Gloss	Bright			98419990	49	75	128	7	3.6
Alphatec	Switchboard Orange	Gloss	Bright			9844207G	227	115	62	29	4.1
Alphatec	X15 Orange	Gloss	Bright			9844461G	231	117	65	30	3.8
Alphatec	Yellow Gold	Gloss	Bright			98433617	250	165	34	48	4.2
Armourspray	Black	Satin	Solid Colour			9129254S	57	58	59	4	2.9
Armourspray	Clear	Gloss	Clear			9121030G	**	**	**	**	**
Armourspray	Clear	Matt	Clear			9121030M	**	**	**	**	**
Armourspray	Silver Kinetic®	Satin	Pearlescent			91K7970S	150	152	152	31	4.3
Armourspray	White	Gloss	Solid Colour			9121401G	245	247	245	93	4.1
Copol	Black	Matt	Solid Colour			95385242	61	61	61	5	0.9
Copol	Inter Black	Satin	Solid Colour			95350852	62	62	63	5	3.3
Duralloy	Apo Grey	Satin	Solid Colour			27232786	179	180	179	46	2.7
Duralloy	Black	Gloss	Solid Colour		✓	2609132G	60	61	61	5	3.6
Duralloy	Black	Gloss	Solid Colour			2729090G	58	57	57	4	3.1
Duralloy	Black (Night Sky®)	Matt	Solid Colour		✓	2609129M	59	60	60	5	1.3
Duralloy	Black (Night Sky®)	Matt	Solid Colour		✓	27219319	59	59	60	5	1.8
Duralloy	Black (Night Sky®)	Satin	Solid Colour		✓	2609128S	59	59	60	4	2.6
Duralloy	Black (Night Sky®)	Satin	Solid Colour		✓	27219268	58	58	59	4	2.5
Duralloy	Charcoal	Gloss	Solid Colour			2729086G	71	74	76	7	3.7
Duralloy	Charcoal	Matt	Solid Colour			2729229M	69	73	76	7	1.7
Duralloy	Charcoal	Satin	Solid Colour		✓	26088351	71	74	77	7	3.1
Duralloy	Charcoal	Satin	Solid Colour			27288351	71	74	77	7	3.1
Duralloy	Classic Pearl White	Gloss	Solid Colour		✓	2601228G	245	247	244	93	4.7
Duralloy	Classic Pearl White	Gloss	Solid Colour			27281880	245	247	244	93	4.3
Duralloy	Deep Ocean®	Matt	Solid Colour		✓	2725422M	77	91	100	10	1.7
Duralloy	Deep Ocean®	Satin	Solid Colour		✓	2725125S	74	88	98	9	2.9
Duralloy	Dune®	Matt	Solid Colour		✓	2727558M	179	171	163	42	2.4
Duralloy	Dune®	Satin	Solid Colour		✓	2723087S	179	170	160	41	2.9
Duralloy	Grey Nurse	Gloss	Solid Colour			2727863G	201	199	189	57	3.9
Duralloy	Lama	Matt	Solid Colour			2723272M	225	187	157	54	2.2
Duralloy	Lexicon® Quarter	Matt	Solid Colour			2721378M	244	243	239	90	2.2
Duralloy	Monument®	Matt	Solid Colour		✓	2609066M	79	80	80	8	1.2
Duralloy	Monument®	Matt	Solid Colour		✓	2729066M	82	82	82	9	1.8
Duralloy	Monument®	Satin	Solid Colour		✓	2609067S	79	80	79	8	2.4
Duralloy	Monument®	Satin	Solid Colour		✓	2729067S	80	80	80	8	2.5
Duralloy	N42 Storm Grey	Satin	Solid Colour			2726535S	143	151	144	30	2.6
Duralloy	Natural White™	Matt	Solid Colour			2721380M	240	235	228	84	2.3
Duralloy	Navy Blue	Gloss	Solid Colour			2725425G	58	77	96	7	3.8
Duralloy	New Life	Matt	Solid Colour			2726541M	164	184	177	46	1.9
Duralloy	Oyster	Matt	Solid Colour		✓	26036858	196	197	193	56	1.3
Duralloy	Oyster	Matt	Solid Colour			27236858	197	197	193	56	1.4
Duralloy	Pale Eucalypt®	Matt	Solid Colour		✓	2726474M	132	137	118	24	1.8
Duralloy	Pale Eucalypt®	Satin	Solid Colour		✓	2606127S	133	138	119	25	2.5
Duralloy	Pale Eucalypt®	Satin	Solid Colour		✓	2726474S	132	137	118	24	3.1
Duralloy	Pearl White	Gloss	Solid Colour		✓	2601229G	240	244	243	90	4.6
Duralloy	Pearl White	Gloss	Solid Colour			2721114G	239	245	244	90	4.7
Duralloy	Pink Sand	Matt	Solid Colour			2724410M	211	186	174	52	2.2
Duralloy	Pre School	Matt	Solid Colour			2725498M	184	199	207	56	1.9
Duralloy	Primrose	Gloss	Solid Colour		✓	26084365	239	219	188	73	3.9
Duralloy	Primrose	Gloss	Solid Colour			27284365	239	219	187	73	3.8
Duralloy	RAL 7032 Pebble Grey	Satin	Solid Colour			2727951S	183	177	161	45	3.0
Duralloy	RAL 7035 Light Grey	Satin	Solid Colour			2727907S	195	199	195	56	2.9
Duralloy	Rivergum Beige	Gloss	Solid Colour			27236991	222	210	196	66	3.4
Duralloy	Territory Red	Matt	Solid Colour			2724411M	143	82	67	12	1.6
Duralloy	Toyota White 040	Gloss	Solid Colour			2721096G	231	232	228	81	3.4
Duralloy	Toyota White 058	Gloss	Solid Colour			2721036G	222	221	211	72	4.3
Duralloy	Transformer Grey	Gloss	Solid Colour			27232186	138	148	142	29	4.0
Duralloy	Wedgewood	Satin	Solid Colour			27250279	101	136	157	23	2.3

RANGE	COLOUR NAME	FINISH	LOOK	RC	CB	PRODUCT CODE	R	G	B	LRV#	SPECULAR
											LIGHT
											REFLECTANCE#
Duralloy	Whisper White	Matt	Solid Colour			2721376M	236	234	226	83	2.4
Duralloy	White	Matt	Solid Colour			2721139M	244	244	239	91	2.3
Duralloy	White	Satin	Solid Colour		✓	2601139S	245	246	242	92	3.0
Duralloy	White	Satin	Solid Colour			2721139S	245	246	242	92	3.0
Duralloy	Wilderness®	Satin	Solid Colour		✓	27284224	111	122	109	19	2.6
Precious	Anodic Bronze Pearl	Satin	Pearlescent			9718416Q	100	89	77	11	2.7
Precious	Bright Gold Pearl	Matt	Pearlescent			9718420Q	176	144	95	30	2.8
Precious	Citi Pearl	Matt	Pearlescent			97188471	172	177	180	44	2.6
Precious	Copper Pearl	Satin	Pearlescent			9714137Q	158	114	90	20	3.6
Precious	Metro Bronze Pearl	Satin	Pearlescent			97159003	89	86	85	10	3.2
Precious	Onyx Pearl	Gloss	Pearlescent			97152052	79	82	83	8	4.5
Precious	Silver Kinetic® Pearl	Satin	Pearlescent			9717043K	162	164	163	37	4.2
Precious	Steel Pearl	Gloss	Pearlescent			97157127	87	90	92	10	4.1
Primers	E-Prime	Matt	Solid Colour			95388386	177	180	183	46	1.6
Primers	Zincshield	Matt	Solid Colour			9907036M	113	122	127	19	1.6
Protecture	Black	Flat	Textured			20T9215F	61	61	62	5	0.2
Protecture	Dark Bronze	Flat	Textured			21T8184F	70	66	64	6	1.0
Protecture	Monument®	Flat	Textured		✓	20T9067F	81	81	81	8	0.9
Protecture	Natural White™	Flat	Textured			20T1119F	237	235	230	84	0.7
Protecture	Shale Grey™	Flat	Textured		✓	20T7834F	186	186	182	49	0.6
Protecture	Silver Pearl	Flat	Textured			21T7958F	153	155	156	33	0.3
Protecture	White	Flat	Textured			20T1373F	243	245	243	91	0.8
Protecture	Yellow	Flat	Textured			20T2308F	233	166	69	45	0.6
Surreal Effects	APO Grey Ripple	Gloss	Ripple			90136612	181	181	179	43	1.1
Surreal Effects	Aztec Black Ripple	Gloss	Pearl Vein Ripple			90182757	109	114	117	17	1.9
Surreal Effects	Aztec Silver Ripple	Gloss	Pearl Vein Ripple			90185040	99	103	105	13	2.2
Surreal Effects	Black Ripple	Gloss	Ripple			90150003	62	63	64	5	1.3
Surreal Effects	Blue Hammer Ripple	Gloss	Colour Vein Ripple			90185159	52	91	112	9	2.6
Surreal Effects	Grey Hammer Ripple	Gloss	Colour Vein Ripple			90185184	123	125	127	21	3.2
Surreal Effects	Horizon White Ripple	Gloss	Ripple			90151608	240	239	232	86	1.1
Surreal Effects	Mannex Black Texture	Flat	Textured			90132679	61	61	62	5	0.4
Surreal Effects	Mannex Suede Texture	Flat	Textured			90137543	203	198	189	57	0.8
Surreal Effects	Mannex White Texture	Flat	Textured			90133641	240	243	240	89	1.5
Surreal Effects	N42 Storm Grey Ripple	Gloss	Ripple			9016535Z	144	151	144	30	1.2
Surreal Effects	Notre Dame Ripple	Gloss	Ripple			90150223	107	111	113	16	1.2
Surreal Effects	RAL 7032 Pebble Grey Ripple	Gloss	Ripple			9017951Z	183	177	160	44	1.8
Surreal Effects	RAL 7035 Light Grey Ripple	Gloss	Ripple			9017907Z	196	199	195	57	1.2
Surreal Effects	Safety Yellow Ripple	Gloss	Ripple			9012015Z	244	160	48	45	2.2
Surreal Effects	X15 Orange Ripple	Gloss	Ripple			9014461Z	229	116	64	30	1.9

Light Reflectance Value (LRV): The total amount of visible light reflected from the coating, expressed as a percentage of total incoming light. Surfaces with higher light reflectance values appear lighter while surfaces with low light reflectance values appear darker.

Specular Light Reflectance: The portion of incoming light that is reflected such that the reflected ray is at the same angle to the surface normal as the incoming ray. Specular light reflection is expressed as a percentage of total incoming light. Surfaces with a lower specular reflection produce less glare as they scatter or absorb a greater portion of the incoming light.

** The RGB, LRV and Specular Light Reflectance values for surfaces finished with a clear coating will vary depending on the substrate or the colour of any base coats used.

For further information on light reflectivity visit duluxpowders.com.au/spec-solutions

† Project type definitions:

- Industrial/Non-habitable projects are those that are not dwelling types. Examples can be furniture, bus shelters, signage etc.
- Residential properties < 4 levels are typically easy to maintain, given their height and access.
- Light commercial projects < 4 levels are sheltered from neighbouring buildings, but require greater durability due to higher usage and wear.
- High rise residential and commercial projects are less sheltered from neighbouring buildings, raising their exposure and reducing their ease of maintenance.
- Prestigious commercial projects attract attention and require high quality finishes to uphold the longevity and design requirements.
- Monumental projects attract the most attention and have the highest standards required to uphold the reputation and protection expected from landmark sites.

Industrial Colour Selector

DURALLOY®
SOLID COLOUR RANGE



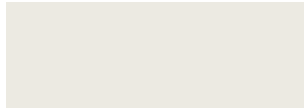
✓ AS 3715

✓ AAMA 2603

Popular solid colours delivered with warranty grade* advanced durable polyester thermosetting powder. Recommended usage includes commercial fitouts, furniture, electrical switchboards and aftermarket automotive equipment. See website for the full range of Duralloy finishes.



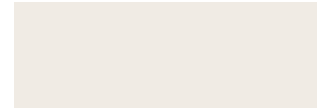
WHITE
Matt 2721139M Satin 2601139S RC
Satin 2721139S



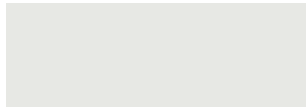
WHISPER WHITE
Matt 2721376M



LEXICON® QUARTER
Matt 2721378M



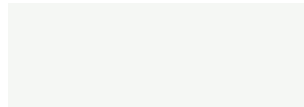
NATURAL WHITE™
Matt 2721380M



TOYOTA WHITE 040
Gloss 2721096G



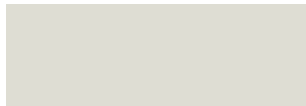
RAL 7032 PEBBLE GREY
Satin 2727951S



CLASSIC PEARL WHITE
Gloss 27281880 Gloss 2601228G RC



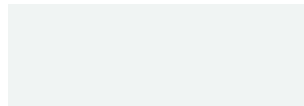
RIVERGUM BEIGE
Gloss 27236991



TOYOTA WHITE 058
Gloss 2721036G



NEW LIFE
Matt 2726541M



PEARL WHITE
Gloss 2721114G Gloss 2601229G RC



DUNE® CB
Matt 2727558M Satin 2723087S



RAL 7035 LIGHT GREY
Satin 2727907S



N42 STORM GREY
Satin 2726535S



PRE SCHOOL
Matt 2725498M



PRIMROSE
Gloss 26084365 RC Gloss 27284365



OYSTER
Matt 27236858 Matt 26036858 RC



TRANSFORMER GREY
Gloss 27232186



WEDGEWOOD
Satin 27250279



LAMA
Matt 2723272M



GREY NURSE
Gloss 2727863G



PALE EUCALYPT® CB
Satin 2606127S RC Satin 2726474S
Matt 2726474M



NAVY BLUE
Gloss 2725425G



PINK SAND
Matt 2724410M



APO GREY
Satin 27232786



WILDERNESS® CB
Satin 27284224



DEEP OCEAN® CB
Satin 2725125S Matt 2725422M



TERRITORY RED
Matt 2724411M



MONUMENT® CB
Matt 2609066M RC Matt 2729066M
Satin 2609067S RC Satin 2729067S



BLACK
Gloss 2729090G Gloss 2609132G RC



CHARCOAL
Matt 2729229M Satin 27288351
Gloss 2729086G Satin 26088351 RC



BLACK (NIGHT SKY®) CB
Matt 2609129M RC Matt 27219319
Satin 2609128S RC Satin 27219268

* Dulux Duralloy®, Precious®, Protecture® and Armourspray® products are supported by Dulux Alumi Shield and Dulux Steel Shield warranties when applied by a Dulux Accredited Powder Coater to the warranty specification on recommended project types and conditions and maintained within the Dulux recommended Care and Maintenance guidelines. For more information visit duluxpowders.com.au/warranties

PRECIOUS®

PEARLESCENT RANGE



✓ AS 3715
✓ AAMA 2603

Beautiful, decorative pearlescent and metallic finishes, delivered with warranty grade* advanced durable polyester thermosetting powder. Recommended usage includes commercial fitouts, lighting, furniture and aftermarket automotive equipment. See website for the full range of Precious finishes.



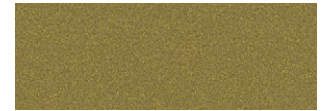
CITI PEARL
Matt 97188471



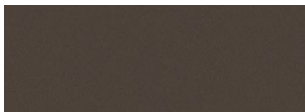
SILVER KINETIC® PEARL
Satin 9717043K



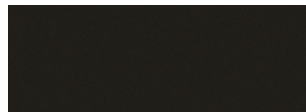
COPPER PEARL
Satin 9714137Q



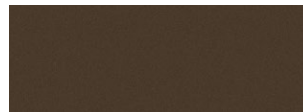
BRIGHT GOLD PEARL
Matt 9718420Q



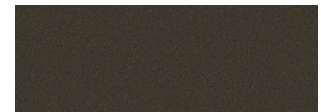
STEEL PEARL
Gloss 97157127



ONYX PEARL
Gloss 97152052



METRO BRONZE PEARL
Satin 97159003



ANODIC BRONZE PEARL
Satin 9718416Q

ALPHATEC®

BRIGHT RANGE



Fun, bright solid colours that produce a big impact, delivered with tough polyester thermosetting powder. Recommended usage includes commercial fitouts, furniture and electrical switchboards. Alphatec is not supported by a Dulux warranty and where colour retention is paramount, we recommend the Duratec® Intensity® powder coat range.



LEMON YELLOW
Gloss 98432120



PINK SPELL
Gloss 9844480G



BLAZE BLUE
Gloss 98419941



MAMBA GREEN
Satin 9846538S



YELLOW GOLD
Gloss 98433617



R13 SIGNAL RED
Gloss 9844481G



FRENCH BLUE
Gloss 98432725



MISTLETOE
Gloss 98451040



SAFETY YELLOW
Gloss 9842015G



FLAME RED
Gloss 98419959



POMMEL BLUE
Gloss 98451034



EGYPTIAN TEAL
Gloss 9846536G



SWITCHBOARD ORANGE †
Gloss 9844207G



X15 ORANGE
Gloss 9844461G



SPACE BLUE
Gloss 98419990



DARK VIOLET
Gloss 98451926

† Recommended if overcoating with white to minimise discolouration of the white topcoat (bleed through).

RC RapidCure Technology enables a possible reduction in energy consumption through lower cure temperatures and/or faster line speeds.

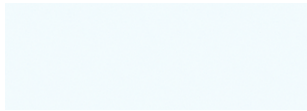
CB COLORBOND® steel and ® colour names are registered trade marks of BlueScope Steel Limited. ™ colour names are trade marks of BlueScope Steel Limited.

PROTEXTURE[®]

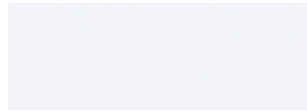
TEXTURED RANGE



Highly mar and scuff resistant textured finishes built to protect, delivered with warranty grade* advanced highly durable polyester thermosetting powder. Recommended usage includes commercial fitouts, furniture and aftermarket automotive equipment. See website for the full range of Protexture finishes.



WHITE
Flat 20T1373F



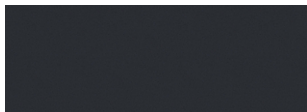
NATURAL WHITE™
Flat 20T119F



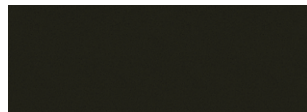
SHALE GREY™
Flat 20T7834F



SILVER PEARL
Flat 21T7958F



MONUMENT®
Flat 20T9067F



DARK BRONZE
Flat 21T8184F



BLACK
Flat 20T9215F



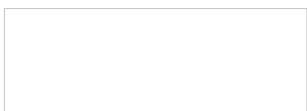
YELLOW
Flat 20T2308F

ARMOURSPRAY[®]

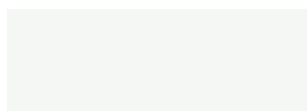
ANTI GRAFFITI POWDERCOAT RANGE



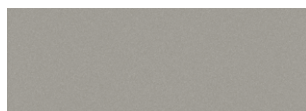
Solid, pearlescent and clear finishes with high chemical resistance allowing the removal of most forms of graffiti, delivered with warranty grade* advanced highly durable polyurethane thermosetting powder. Recommended usage includes public transport infrastructure and street furniture. See product brochure for graffiti removal advice.



CLEAR^
Gloss 9121030G Matt 9121030M



WHITE
Gloss 9121401G



SILVER KINETIC®
Satin 91K7970S



BLACK
Satin 9129254S

COPOL™

INDUSTRIAL POWDERCOAT RANGE



Tough, chemically resistant finishes for interior applications only, delivered with modified epoxy thermosetting powder. Recommended usage includes shop fittings and industrial racking. May also be used for inter-coat exterior applications not exposed to sunlight such as automotive under bodies.



BLACK
Matt 95385242

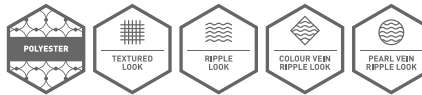


INTER BLACK
Satin 95350852

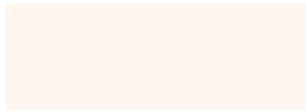
^ The Alumi Shield and Steel Shield Colour Warranties are not applicable to Armourspray clear products. The Alumi Shield and Steel Shield Durability Warranties only apply to Armourspray clear products when applied over Dulux Protexture, Duratec, Electro & Charisma powder coatings.

SURREAL® EFFECTS

INDUSTRIAL POWDERCOAT RANGE



Functional and decorative textures and ripple effect finishes, designed to conceal surface imperfections, delivered with tough polyester thermosetting powder. Recommended usage includes electrical switchboards, commercial fitouts, furniture and aftermarket automotive equipment.



MANNEX® WHITE TEXTURE
Flat 90133641



HORIZON WHITE RIPPLE
Gloss 90151608



RAL 7035 LIGHT GREY RIPPLE
Gloss 9017907Z



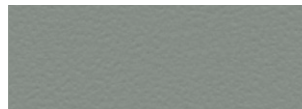
MANNEX® SUEDE TEXTURE
Flat 90137543



X15 ORANGE RIPPLE
Gloss 9014461Z



SAFETY YELLOW RIPPLE
Gloss 9012015Z



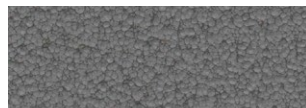
N42 STORM GREY RIPPLE
Gloss 9016535Z



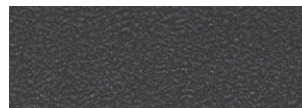
RAL 7032 PEBBLE GREY RIPPLE
Gloss 9017951Z



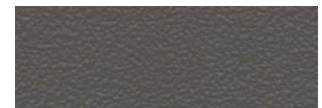
APO GREY RIPPLE
Gloss 9013661Z



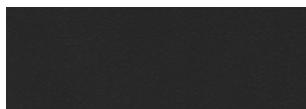
GREY HAMMER RIPPLE
Gloss 90185184



AZTEC BLACK RIPPLE
Gloss 9018275Z



NOTRE DAME RIPPLE
Gloss 90150223



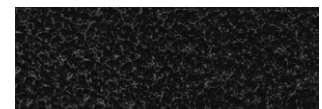
MANNEX® BLACK TEXTURE
Flat 90132679



BLUE HAMMER RIPPLE
Gloss 90185159



BLACK RIPPLE
Gloss 90150003



AZTEC SILVER RIPPLE
Gloss 90185040

RIPPLE ADDITIVE

Speak to your Dulux representative about availability of our ripple additive product.

ZINC SHIELD®

POWDER PRIMER



Excellent protection against corrosion on ferrous (steel) metals, delivered with zinc rich modified epoxy thermosetting powder. Zincshield powder primer is a key component of Dulux Steel Shield warranties.



ZINC SHIELD
Matt 9907036M

E-PRIME™

POWDER PRIMER



Excellent protection around sharp profiles such as perforated aluminium and added protection for ferrous (steel) metals, delivered with modified epoxy thermosetting powder. E-Prime powder primer is a key component of Dulux Alumi Shield warranties on perforated and expanded aluminium and Dulux Steel Shield warranties in highly corrosive environments.



E-PRIME
Matt 95388386

Worth doing, worth Dulux.®

Meeting Industry Standards

Dulux Duralloy, Precious, Protecture and Armourspray powder coat products are designed to meet both the global AAMA and Australian AS3715 standards for aluminium finishes.

	Duralloy	Precious	Protecture	Armourspray
AAMA Standards	Meets 2603	Meets 2603	Exceeds 2603	Exceeds 2603
Coating type	Durable Polyester	Durable Polyester	Highly Durable Polyester	Highly Durable Polyurethane

Project suitability

Ensure you specify the right Dulux powder coat product for your requirements by using the following tables to help define your project by type and exposure conditions.

The Industrial Colour Selector features products suitable for industrial applications including furniture, commercial fitouts, electrical switchboards and aftermarket automotive equipment. Refer to our Architectural and Premium Architectural Colour Selector cards and website for ranges suitable for architectural projects and associated conditions.

Product Suitability by Project

Project, Environment and Conditions

Project Type ¹	Environment	Conditions ¹	Top Coat Choice ²					
			Duralloy/ Precious ³	Protecture ⁴	Armourspray ⁴	Alphatec ⁵	Surreal Effects ⁵	Copul
Industrial/Non-habitable	Exterior	Severe (C4-C5)		●	●			
Industrial/Non-habitable	Exterior	Mild (C2-C3)	●	●	●	○	○	
All Projects	Interior	Moderate Interior (C3-C4)		●	●			
All Projects	Interior	General Interior (C1-C2)	●	●	●	○	○	○

- Steel Shield and Alumi Shield Warranties available.
- Non-Warrantable.

- For more information about project conditions, corrosivity zones and corrosion rates refer to duluxpowders.com.au/warranties.
- Primers may be required for perforated and expanded aluminium depending on project conditions and are required for all warrantable steel applications. For full system requirements refer to duluxpowders.com.au/warranties.

- Duralloy and Precious are only suitable for coastal, river and lake salt water environments >100m from the high tide and are NOT suitable in strongly acidic or caustic environments so the pH must be between 5 and 9.
- Protecture and Armourspray are only suitable for coastal, river and lake salt water environments >10m from the high tide and are NOT suitable in strongly acidic or caustic environments so the pH must be between 5 and 9.
- Alphatec and Surreal Effects are only suitable for coastal, river and lake salt water environments >500m from the high tide and is NOT suitable in strongly acidic or caustic environments so the pH must be between 5 and 9.

For more information on specifying the right product for your project, call 13 24 99 or visit duluxpowders.com.au

Warranted Performance

Dulux Duralloy, Precious, Protecture and Armourspray powder coat products are backed by product specific warranties on:

- Architectural aluminium, including perforated aluminium and expanded aluminium
- Mild steel, bright/semi bright steel, black steel and blue steel

	Warranty	Duralloy	Precious	Protecture	Armourspray ^{**}
Alumi Shield™ Warranty	Aluminium Durability	10 Years	10 Years	15 Years	15 Years [^]
	Aluminium Colour	10 Years	10 Years	15 Years	15 Years [^]
Steel Shield™ Warranty	Steel Corrosion	Up to 10 Years	Up to 10 Years	Up to 10 Years	Up to 10 Years [^]
	Steel Colour	10 Years	10 Years	15 Years	15 Years [^]

[^] The Alumi Shield and Steel Shield Colour Warranties are not applicable to Armourspray clear products. The Alumi Shield and Steel Shield Durability Warranties only apply to Armourspray clear products when applied over Dulux Protecture, Duratec, Electro & Charisma powder coatings.

^{**} Warranties for Armourspray apply to the stocked products listed in this Colour Selector and CustomColours on request only.

Warranties are made up of a colour warranty (for fade and chalking), durability warranty (film integrity for aluminium only), and corrosion warranty (for steel only). They are only valid when applied by a Dulux Accredited Powder Coater to the warranty specification on recommended project types and conditions.

For more information visit duluxpowders.com.au/warranties

Dulux Accredited Powder Coaters

Only Dulux Accredited Powder Coaters are able to issue our Dulux Alumi Shield™ and Steel Shield™ warranties after demonstrating their capability to meet stringent quality conditions and international standards.



For more information visit duluxpowders.com.au/accredited

CustomColour™

Our Industrial and Architectural Colour Selector cards feature our range of stocked, readily available products and colours. If you can't find the colour you require in a particular product, Dulux offer a premium CustomColour™ service. Call 13 24 99 or visit duluxpowders.com.au/custom-colour

Advice Line

Our dedicated consultants can help simplify the specification process, saving you time and money by providing the right coating advice for your project. Call 13 24 99 or visit duluxpowders.com.au

Offices

Australia

Dulux Powder Coatings
115 Pound Road West, Dandenong South VIC 3175
T (61) 3 8787 4500

New Zealand

Dulux Powder Coatings
31B Hillside Road, Glenfield, Auckland 0627
T (64) 4 896 0911

East China

DGL International Powder Coatings
Room 2-2, 2-3, Building 5,
56 Jin Liang Road, Zhu Qiao Town,
Pu Dong New District, Shanghai 200120
T (86) 21 3825 8507

South China

DGL International Powder Coatings
Room 505, Building 10, Lihe Technology Park,
99 Tao Yuan East Road, Shishan Town, Nanhai,
Foshan, Guangdong, 528200
T (86) 21 3825 8507